

GUEST FEATURE

Linda Wysong Creates "Moving Sculptures"

Last spring, the National Building Museum in Washington DC exhibited a performance sculpture created by Portland artist and union journeyman carpenter Linda Wysong. Ms Wysong calls the work "Moving Circles." She describes it as "a complex and carefully orchestrated pattern comparable to the choreography of a dance."

This work is one of a series of sculptural installations that Ms Wysong has created in her Art at Work projects. She has been designing these projects since 1983. An honor graduate of the University of Maryland, Ms Wysong holds a Masters degree in Art History from the University of Maryland.

More than 50 tons of modular steel, wood forms and hardware were assembled in the "Moving Circles" sculpture over a two-and-one-half day period prior to the exhibit. During that time, the process of the work and the movement of the workers became important elements of the project as observers viewed both the choreography of the construction and the strong geometry of the completed structures.

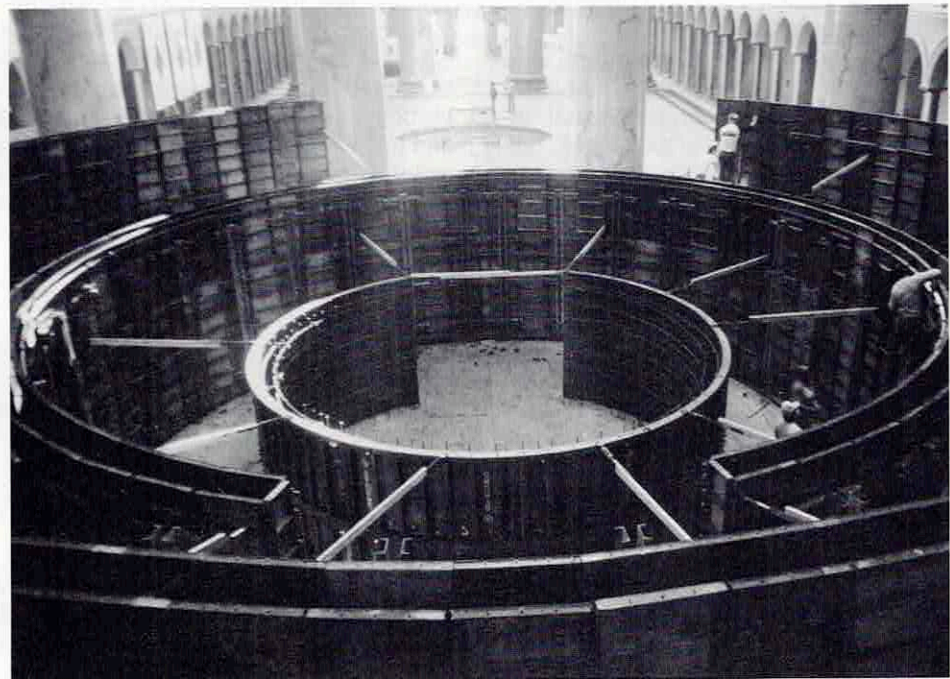
According to Ms Wysong, "Moving Circles is designed to give the viewer a sense of depth." It is composed of three large, concentric, tank-like forms with stepped elevations. "The sensation of narrowing spaces becomes more intense as the viewer participates and moves through the completed sculpture. This dichotomy between a sense of confinement and restriction within immense architectural space is often experienced in the actual workplace," states Ms. Wysong.

In addition to its performance and spatial aspects, the sculpture draws attention to the power and beauty of construction materials. Ms Wysong says, "The materials of a project speak strongly and directly. The way these materials are used when forming the support system of a building tells us even more. Facades are constantly changing, but structure is less prone to fashion and addresses underlying values."

The performance sculpture was de-



Lynda Wysong
Artist



"Moving Circles" Structural Dimensions

The inner circle shown in the photograph is 8 feet high and 22 feet across, built of patented adjustable-radius steel forms. The 10 panels each weigh 650 pounds. The middle circle is 12 feet high and 40 feet across, surrounded by

signed to broaden the appreciation of the builder's skills by bringing a construction work within museum walls, and inviting the public to watch what Ms Wysong refers to as the "carefully orchestrated pattern" of the form assembly. Some 40 workers—carpenters, laborers, ironworkers and operating engineers completed the installation.

Other installations by Ms Wysong have been shown at the Portland Art Museum, Northwest Artists Workshop, Oregon School of Arts and Crafts, and Oregon Museum of Science and Industry in Portland, and the Center of Contemporary Art and Gallery in Seattle.

Editor's Note: The entire construction process of "Moving Circles" was filmed by noted director Virginia Quesada. She is working with Ms Wysong to produce a half-hour film on the project. They are soliciting donations to fund the film. A short edited tape is available to show to potential contributors. If you would like to view the tape and/or make a donation to this project, contact Ms Wysong at 3315 NE 18th Ave, Portland OR 97212.

an outer circle of forms 16 feet high and 60 feet across. The two outer circles contain 552 steel and plywood modular form panels, 6,000 wedge bolts, and 840 mini-walers. All told, the sculpture weighs 101,237 pounds.